



# LAND PLANS: 2.2

**DECARBONISATION**

## Cory Decarbonisation Project

PINS Reference: EN010128

**January 2025**

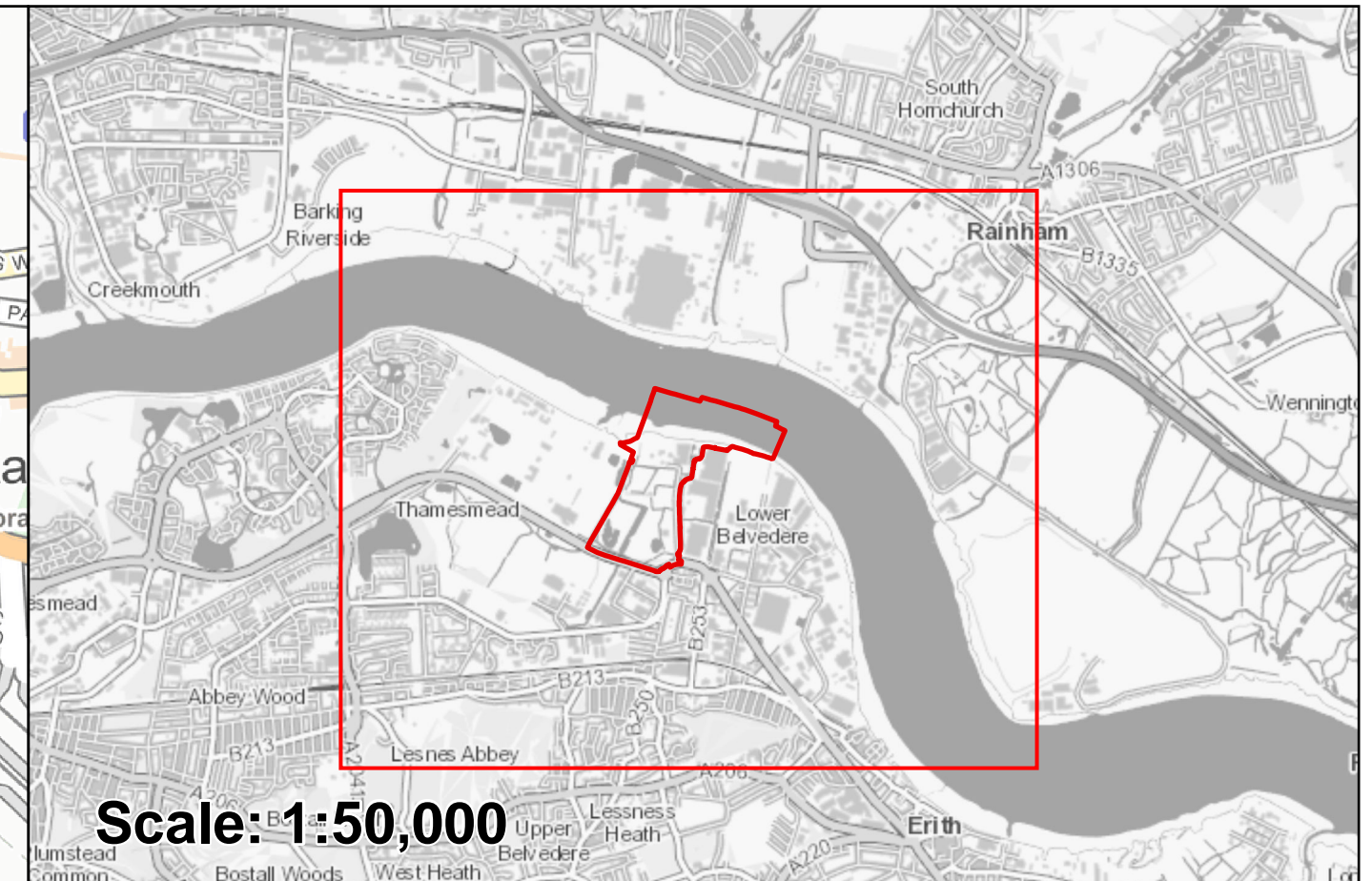
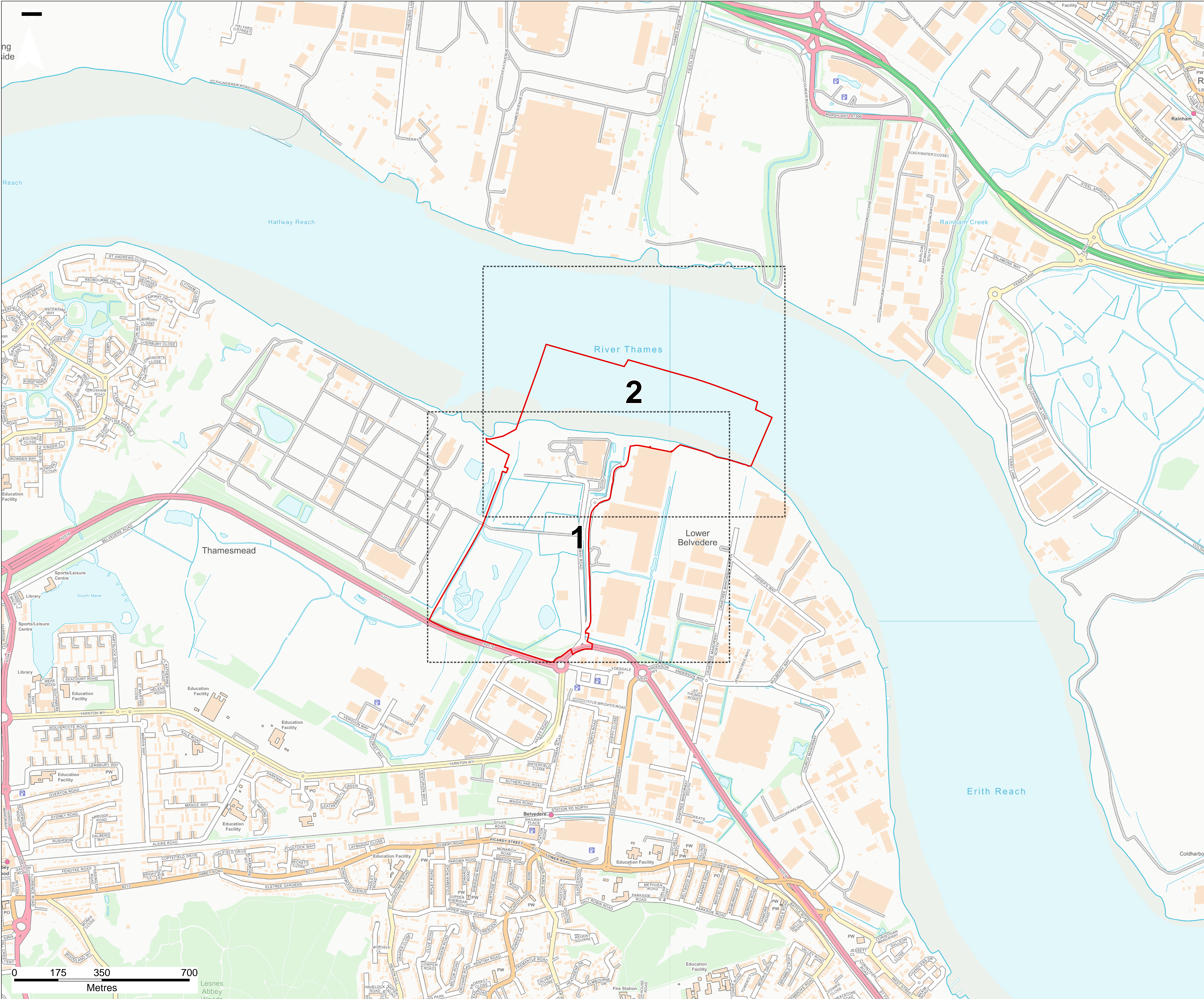
**Revision P05**



## QUALITY CONTROL

---

Document Reference		2.2			
Document Owner		WSP			
Revision	Date	Comments	Author	Check	Approver
P01	March 2024	Submitted with DCO Application	SB	MD	PZ, AV
P02	May 2024	S51 Response	SB	MD	PZ, AV
P03	September 2024	For DCO Examination	SB	MD	PZ, AV
P04	October 2024	For Change Request 1	KD	MD	PZ, AV
P05	January 2025	For Change Request 2	SB	MD	PZ



Scale: 1:50,000

**Legend**

Order limits

CONTAINS OS DATA © CROWN COPYRIGHT [AND DATABASE RIGHT] [2024].

P05	SB	MD	PZ	January 2025
-----	----	----	----	--------------

For Change Request 2

REVISION	DRAWN	CHECKED	APPROVED	DATE
----------	-------	---------	----------	------



**PROJECT TITLE:**  
CORY DECARBONISATION PROJECT

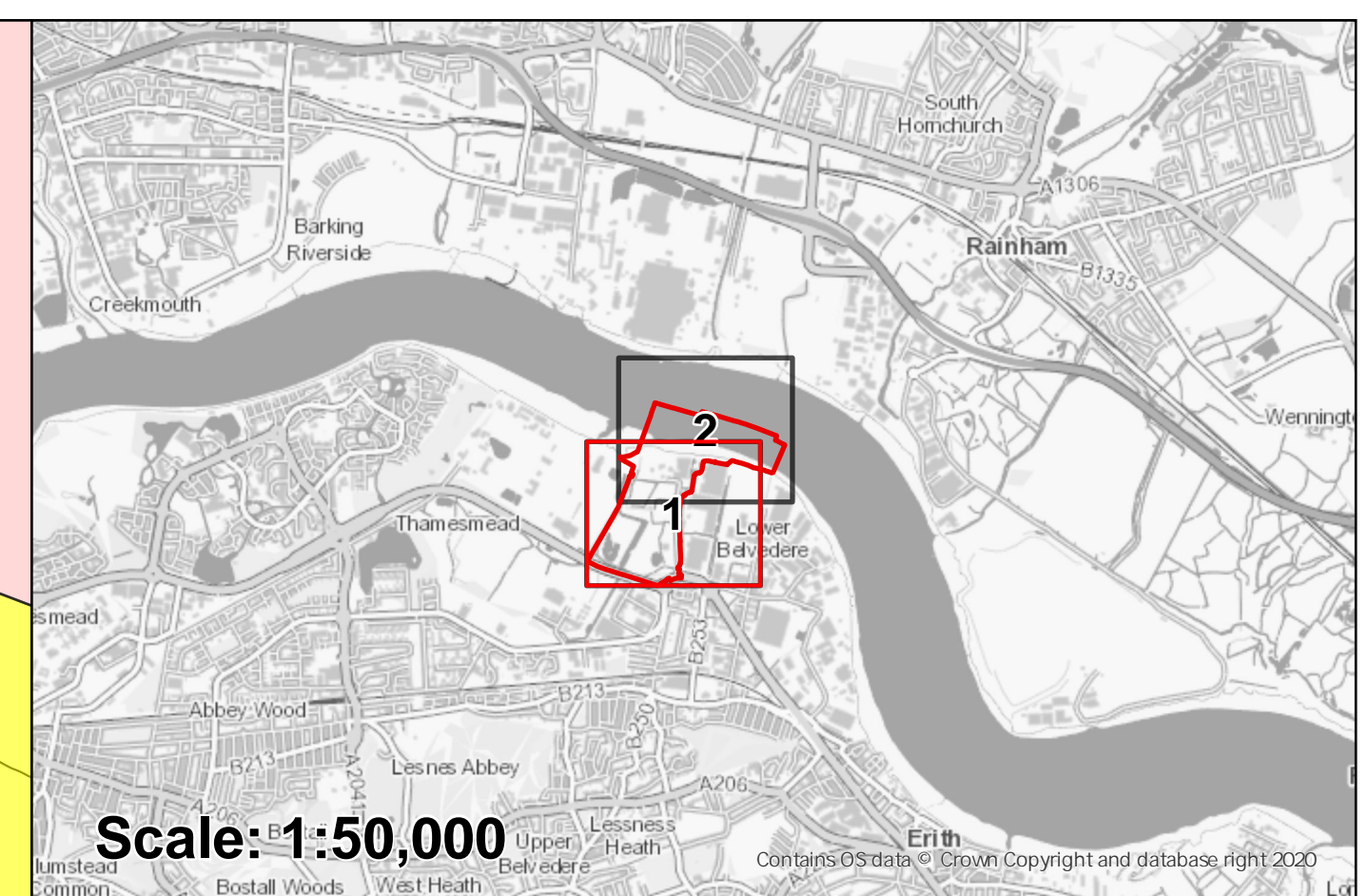
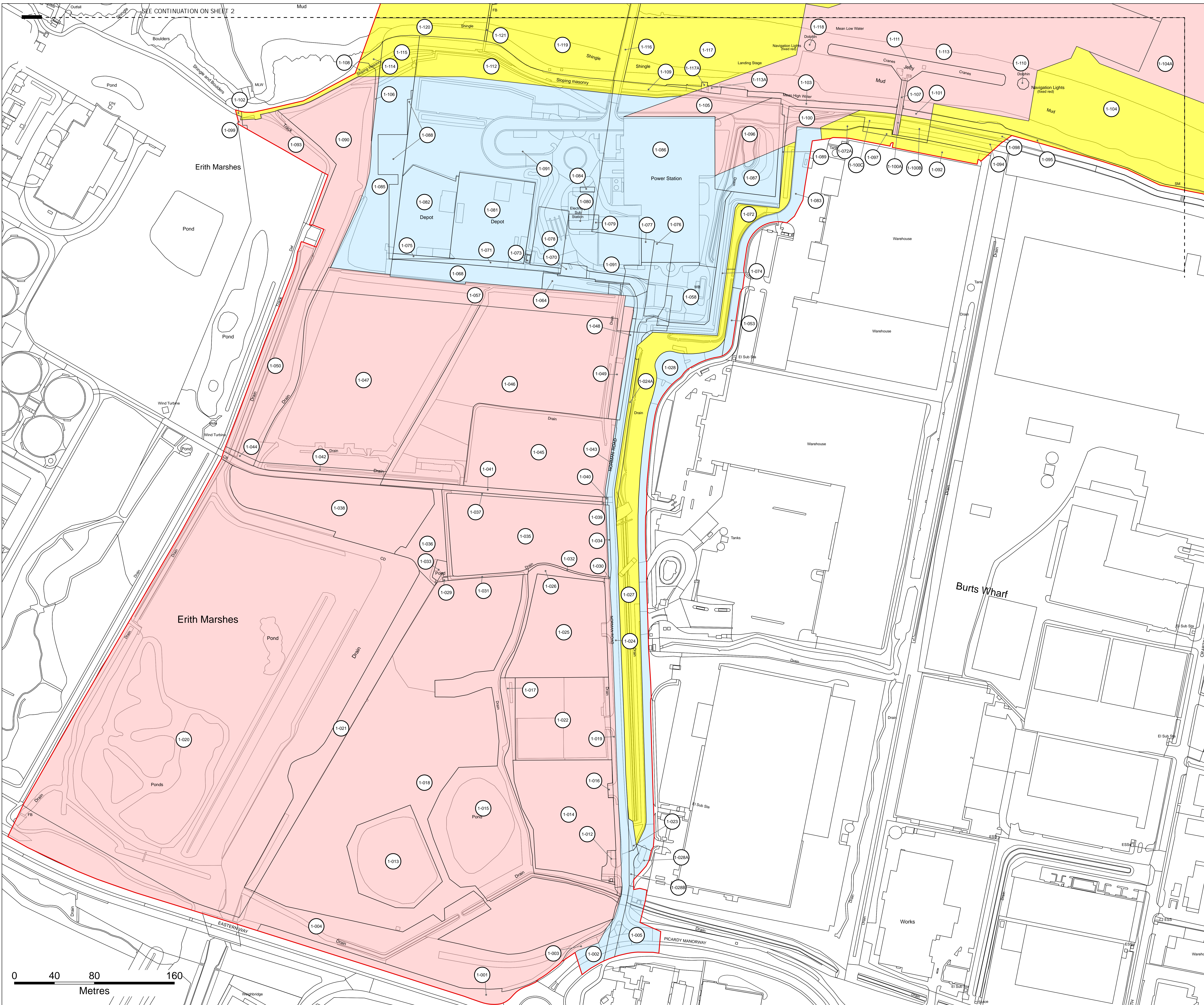
**DRAWING TITLE:**  
LAND PLANS  
REGULATION 5(2)(i)  
APPLICATION DOCUMENT REFERENCE 2.2  
KEY PLAN

**DRAWING STATUS:** For Change Request 2

<b>DRAWN:</b> SB	<b>CHECKED:</b> MD	<b>APPROVED:</b> PZ	<b>AUTHORISED:</b> AV
---------------------	-----------------------	------------------------	--------------------------

<b>SCALE @ A0 SIZE:</b> 1:5,000	<b>DATE:</b> January 2025	<b>REVISION:</b> P05
------------------------------------	------------------------------	-------------------------

**DRAWING NUMBER:**  
EN010128-WSP-00-XX-RP-ENS-Key-Plan



Scale: 1:50,000

**Legend**

- Order limits
- Order land - freehold and leasehold to be compulsorily acquired and in relation to which it is proposed to extinguish easements, servitudes, and other private rights.
- Order land - temporary use of land in relation to which it is proposed to suspend easements, servitudes and other private rights.
- Order land - new rights to be compulsorily acquired and in relation to which it is proposed to extinguish easements, servitudes, and other private rights.

- Notes:**
1. All dimensions are in metres unless stated otherwise.
  2. These Land Plans should be read in conjunction with other plans and documents in the Development Consent Order application in particular the Book of Reference.
  3. The number labels relate to plot numbers. Please refer to the Book of Reference for more information about these plots, including the approximate area of each plot (in square metres). Plot numbers include a reference to the relevant sheet of the Land Plans. In this numbering convention, a plot number comprises the sheet number followed by the actual plot number, e.g. Plot 1-024, where '1' is the sheet number (sheet 1) and '024' is the plot number (024 on sheet 1).

CONTAINS OS DATA © CROWN COPYRIGHT [AND DATABASE RIGHT] [2024] OS [0100031673]

P05	SB	MD	PZ	January 2025
-----	----	----	----	--------------

For Change Request 2				
REVISION	DRAWN	CHECKED	APPROVED	DATE
DESCRIPTION				



**PROJECT TITLE:**  
CORY DECARBONISATION PROJECT

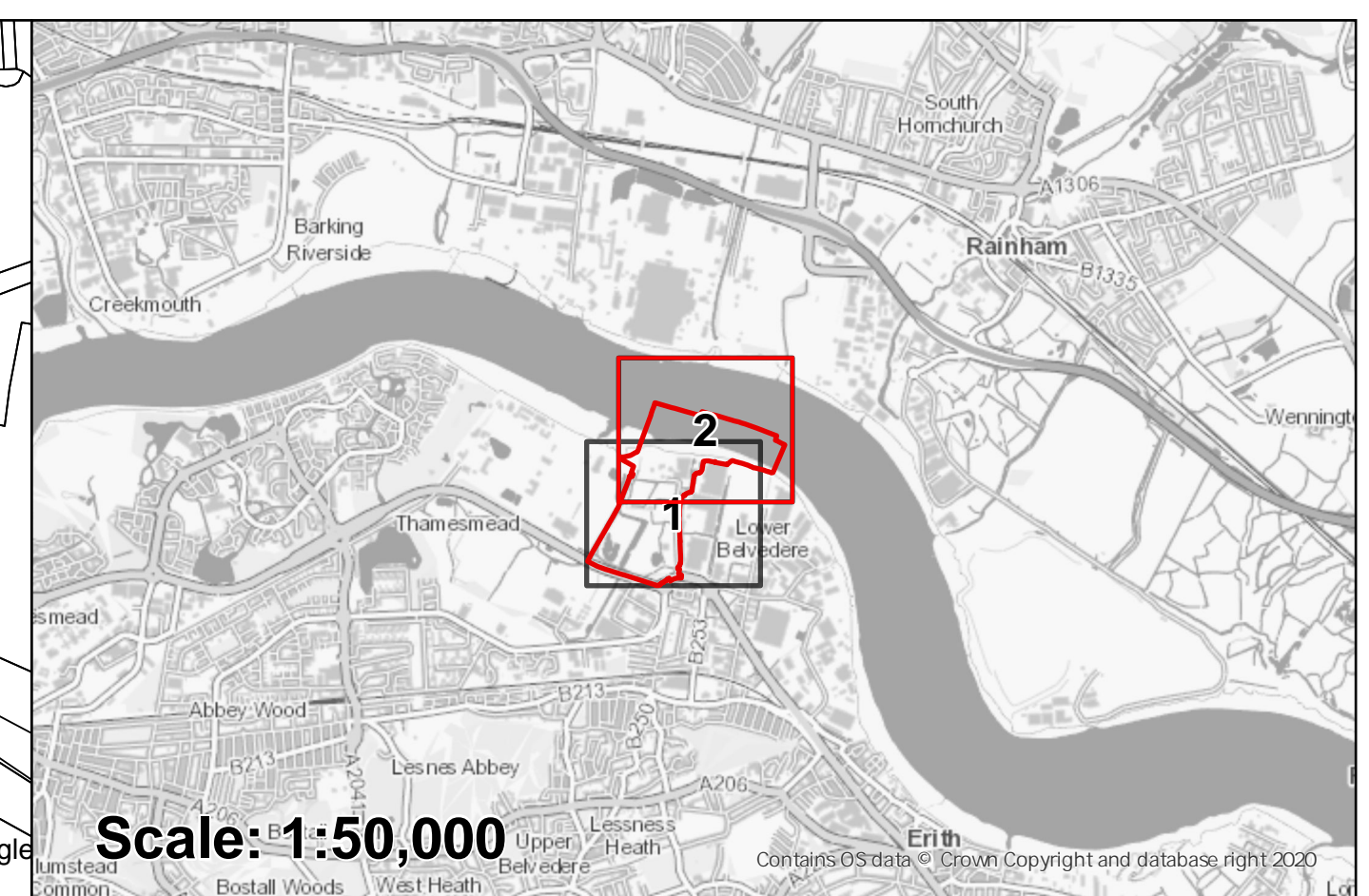
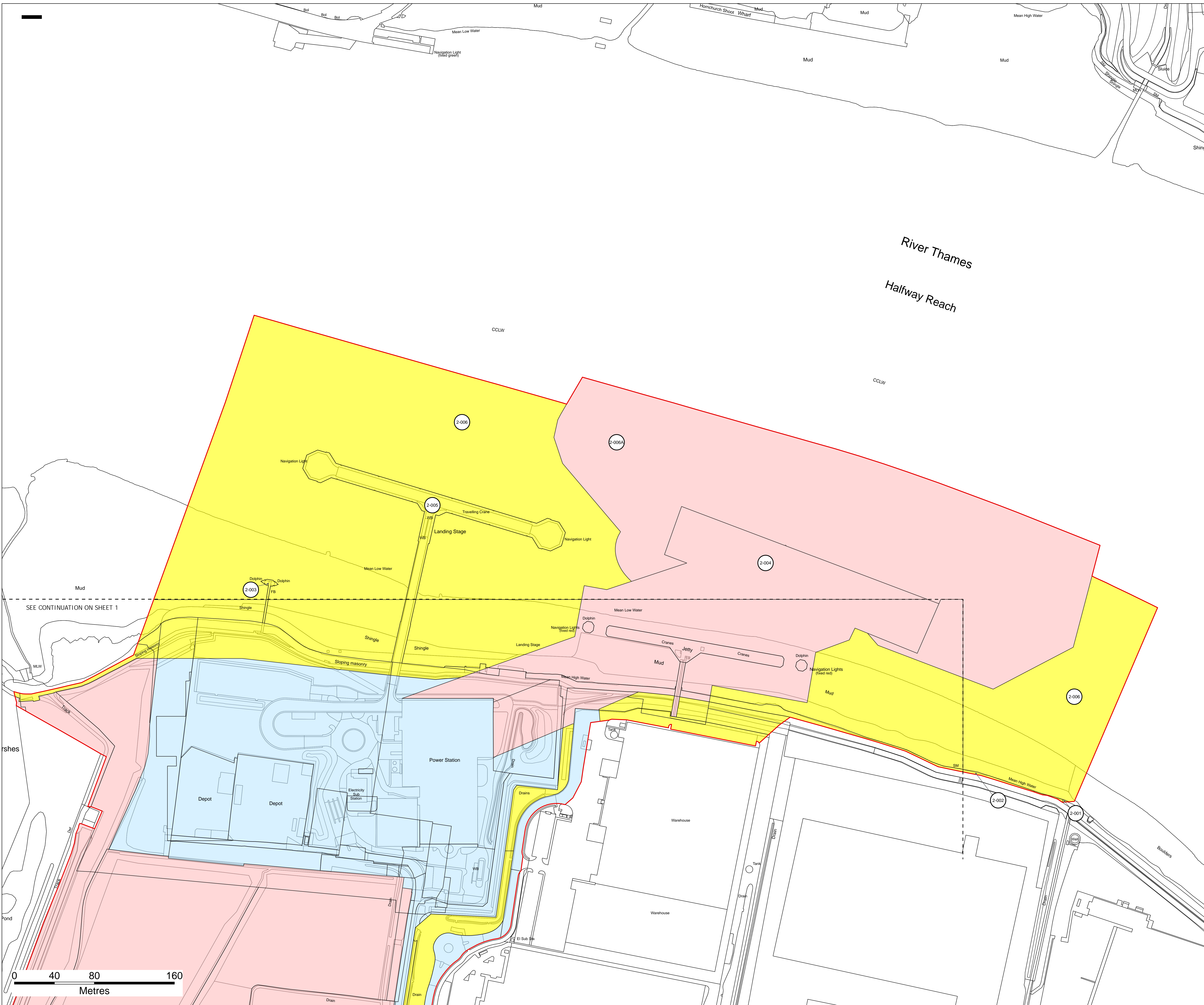
**DRAWING TITLE:**  
LAND PLANS  
REGULATION 5(2)(i)  
APPLICATION DOCUMENT REFERENCE 2.2  
Sheet 1 of 2

**DRAWING STATUS:** For Change Request 2

<b>DRAWN:</b> SB	<b>CHECKED:</b> MD	<b>APPROVED:</b> PZ	<b>AUTHORISED:</b> AV
---------------------	-----------------------	------------------------	--------------------------

<b>SCALE @ A0 SIZE:</b> 1:1,250	<b>DATE:</b> January 2025	<b>REVISION:</b> P05
------------------------------------	------------------------------	-------------------------

**DRAWING NUMBER:**  
EN010128-00-XX-RP-ENS-0202-P05



- Legend**
- Order limits
  - Order land - freehold and leasehold to be compulsorily acquired and in relation to which it is proposed to extinguish easements, servitudes, and other private rights.
  - Order land - temporary use of land in relation to which it is proposed to suspend easements, servitudes and other private rights.
  - Order land - new rights to be compulsorily acquired and in relation to which it is proposed to extinguish easements, servitudes, and other private rights.

- Notes:**
1. All dimensions are in metres unless stated otherwise.
  2. These Land Plans should be read in conjunction with other plans and documents in the Development Consent Order application in particular the Book of Reference.
  3. The number labels relate to plot numbers. Please refer to the Book of Reference for more information about these plots, including the approximate area of each plot (in square metres). Plot numbers include a reference to the relevant sheet of the Land Plans. In this numbering convention, a plot number comprises the sheet number followed by the actual plot number, e.g. Plot 1-024, where '1' is the sheet number (sheet 1) and '024' is the plot number (024 on sheet 1).

CONTAINS OS DATA © CROWN COPYRIGHT [AND DATABASE RIGHT] [2024] OS [0100031673]

P05	SB	MD	PZ	January 2025
For Change Request 2				
REVISION	DRAWN	CHECKED	APPROVED	DATE
DESCRIPTION				



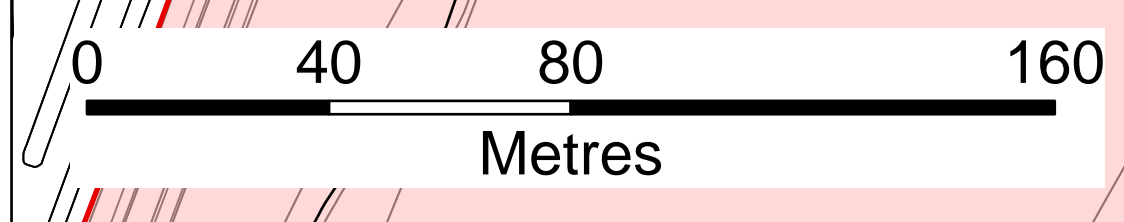
**PROJECT TITLE:**  
CORY DECARBONISATION PROJECT

**DRAWING TITLE:**  
LAND PLANS  
REGULATION 5(2)(i)  
APPLICATION DOCUMENT REFERENCE 2.2  
Sheet 2 of 2

**DRAWING STATUS:** For Change Request 2

<b>DRAWN:</b> SB	<b>CHECKED:</b> MD	<b>APPROVED:</b> PZ	<b>AUTHORISED:</b> AV
<b>SCALE @ A0 SIZE:</b> 1:1,250		<b>DATE:</b> January 2025	<b>REVISION:</b> P05

**DRAWING NUMBER:**  
EN010128-00-XX-RP-ENS-0202-P05





## DECARBONISATION

10 Dominion Street  
Floor 5  
Moorgate, London  
EC2M 2EF  
Contact Tel: 020 7417 5200  
Email: [enquiries@corygroup.co.uk](mailto:enquiries@corygroup.co.uk)  
**[corygroup.co.uk](http://corygroup.co.uk)**